

The technical drawing consists of two views of a manhole assembly:

- Top View (Left):** Shows a square manhole cover with a central circular opening labeled "PROJEÇÃO DA INSPEÇÃO". The cover is labeled "TAMPAO DE RUA ø0,60m". It is surrounded by a square frame. Two side views of the frame are shown, labeled "ø0,40m" and "CHEGADA LATERAL (BL)". The top and bottom of the frame are labeled "ENTRADA 2 ø VARIAZ" and "SAIDA ø VARIAEL" respectively, with arrows indicating flow direction.
- Side View (Right):** Shows the vertical profile of the manhole. The top is labeled "TAMPAO ø0,60m". The side walls are labeled "ø0,40m" and "CHEGADA LATERAL (BL)". The bottom is labeled "ENTRADA 1 ø VAR" and "SAIDA ø VAR". The base is labeled "LASTRO DE CONCRETO MAGRO e=5 cm".

Technical drawing of a rectangular plate. The overall width is 55 and the overall height is 10. The plate has a central rectangular hole with a width of 51 and a height of 6. The hole is labeled "P3 - 6ø1/4\"". Below the plate, there are two labels: "P-1" and "P-2".

55

10

51

6

P3 - 6ø1/4"

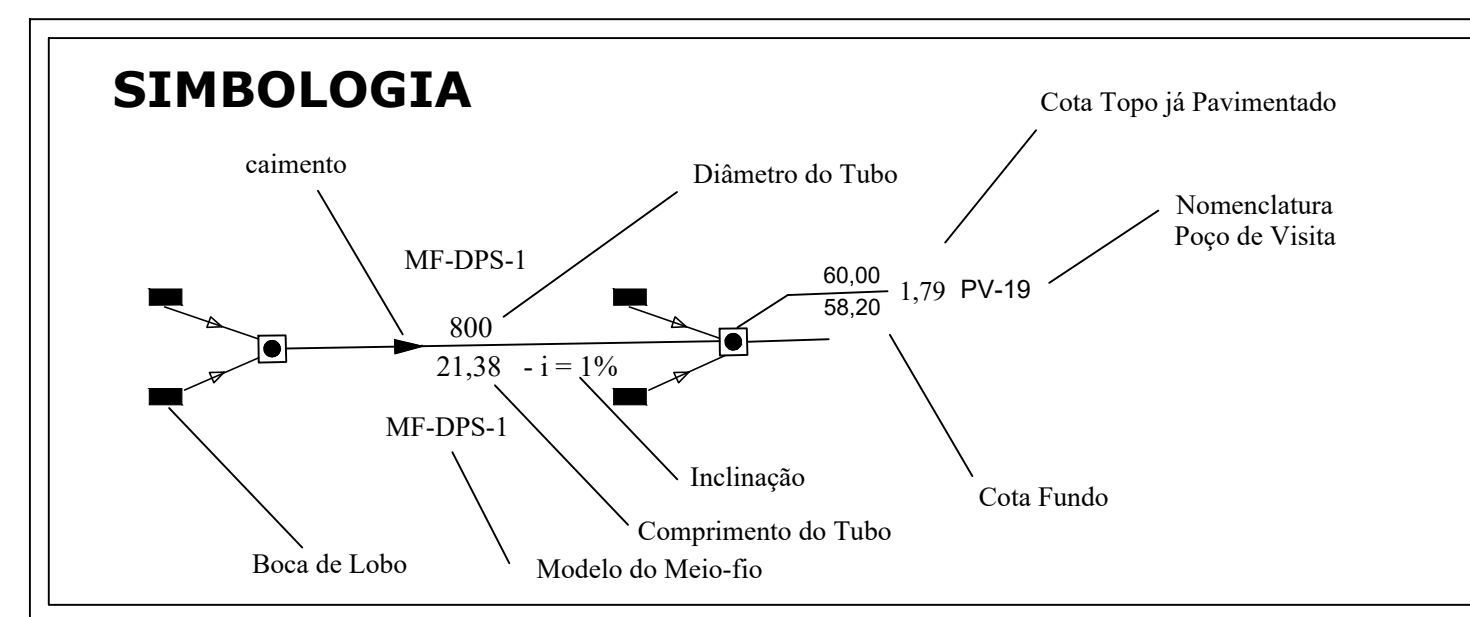
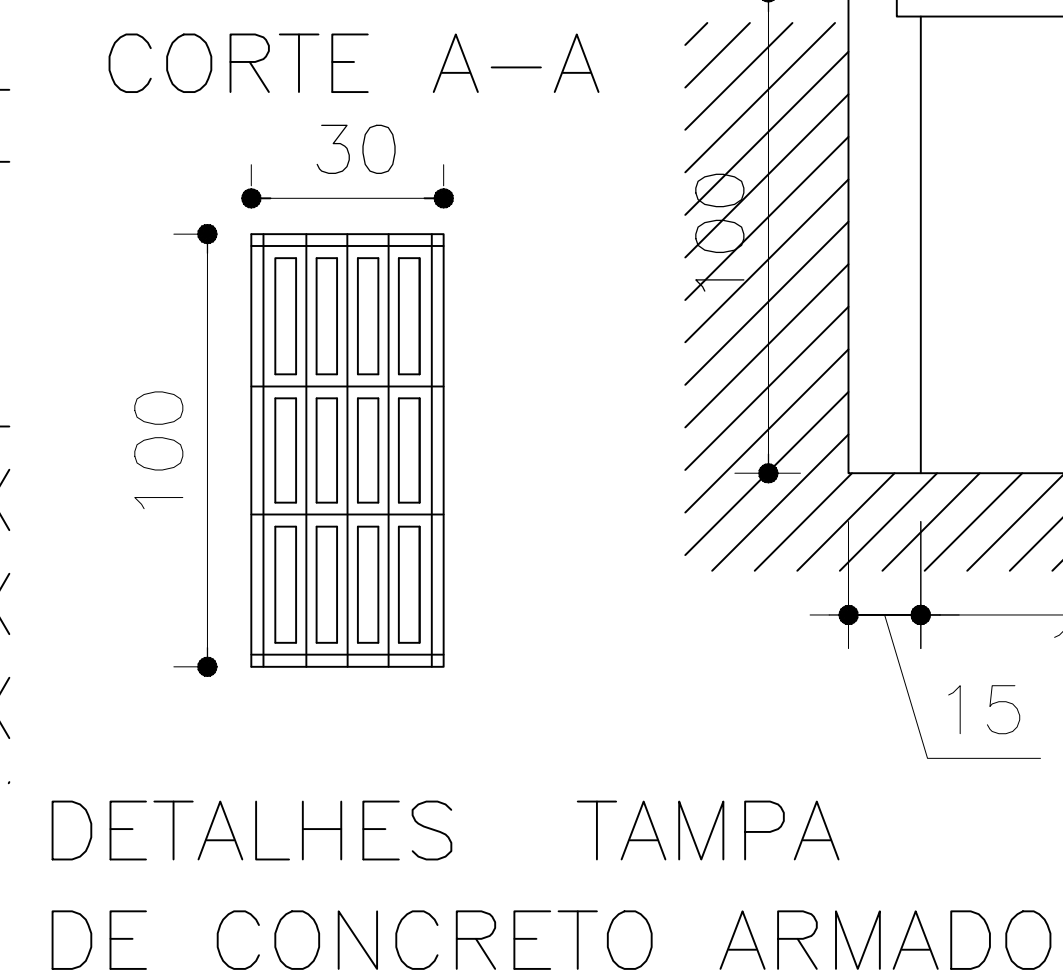
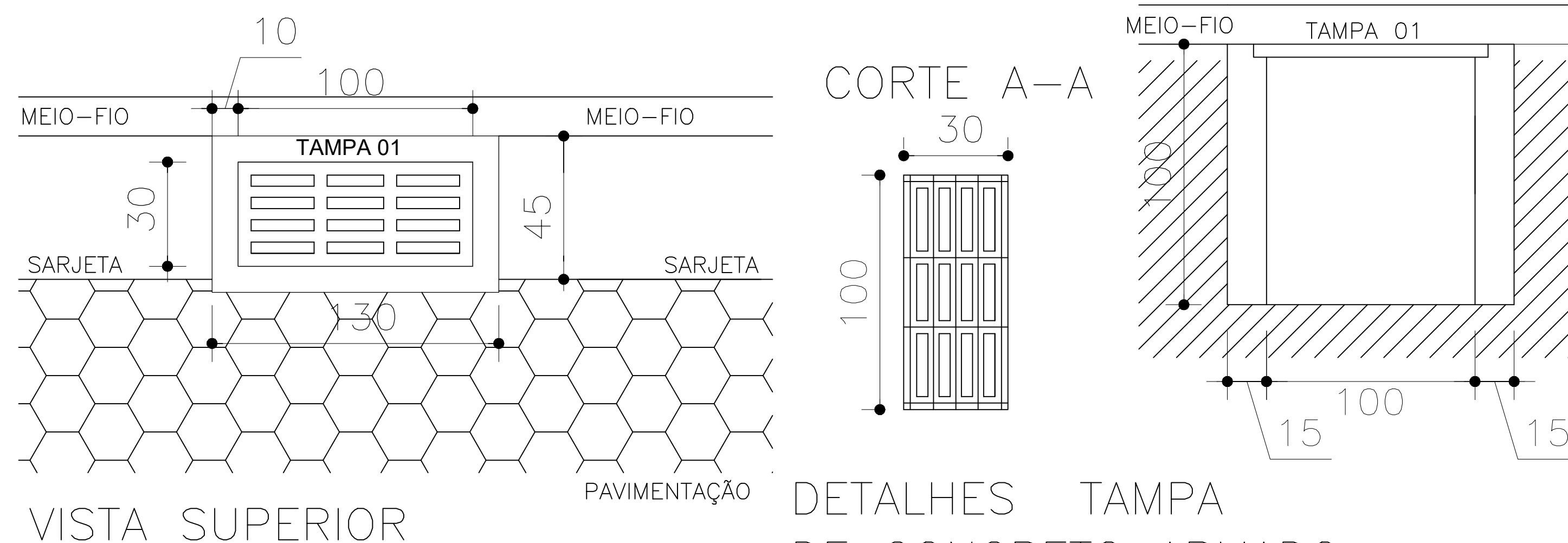
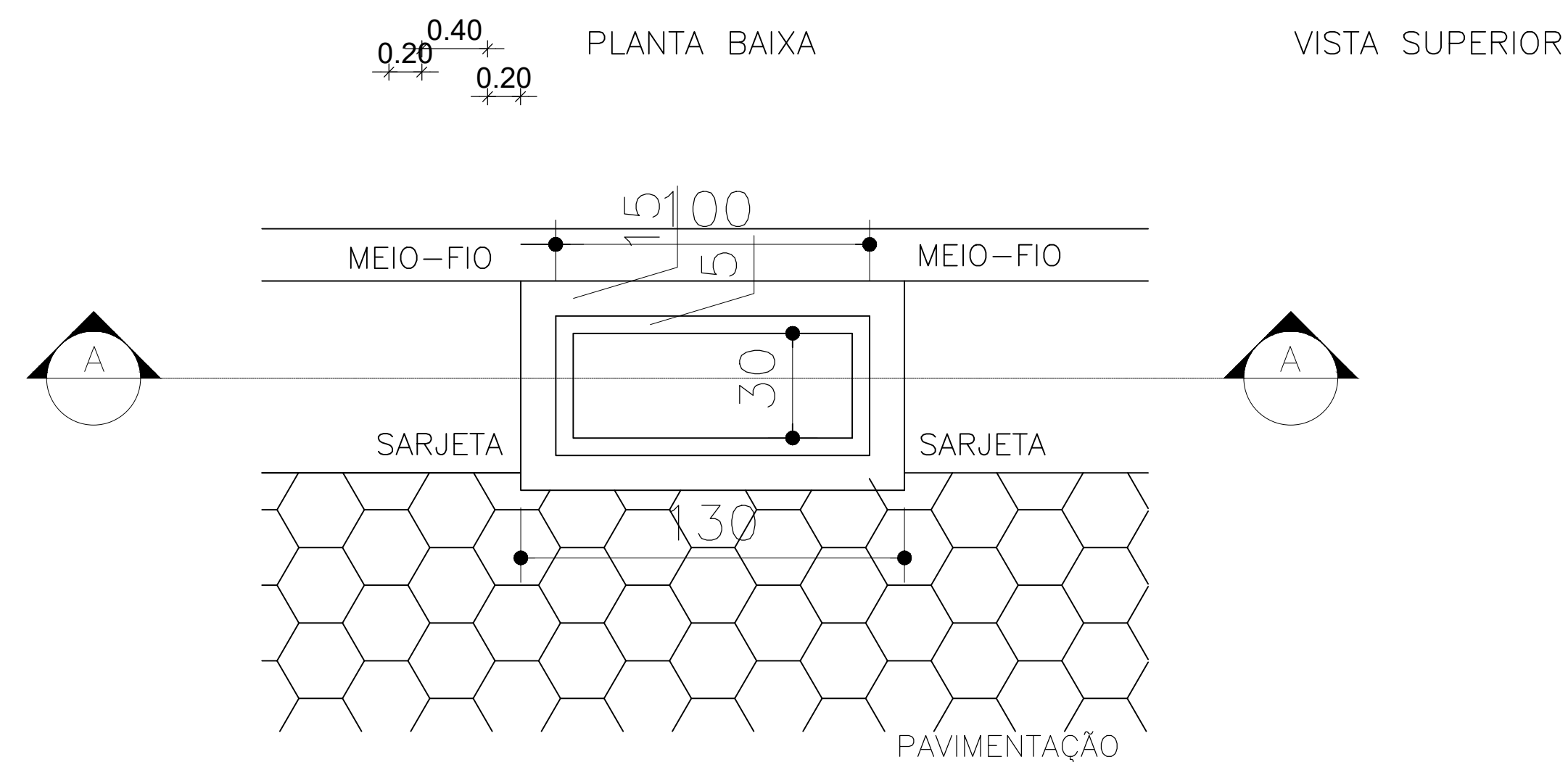
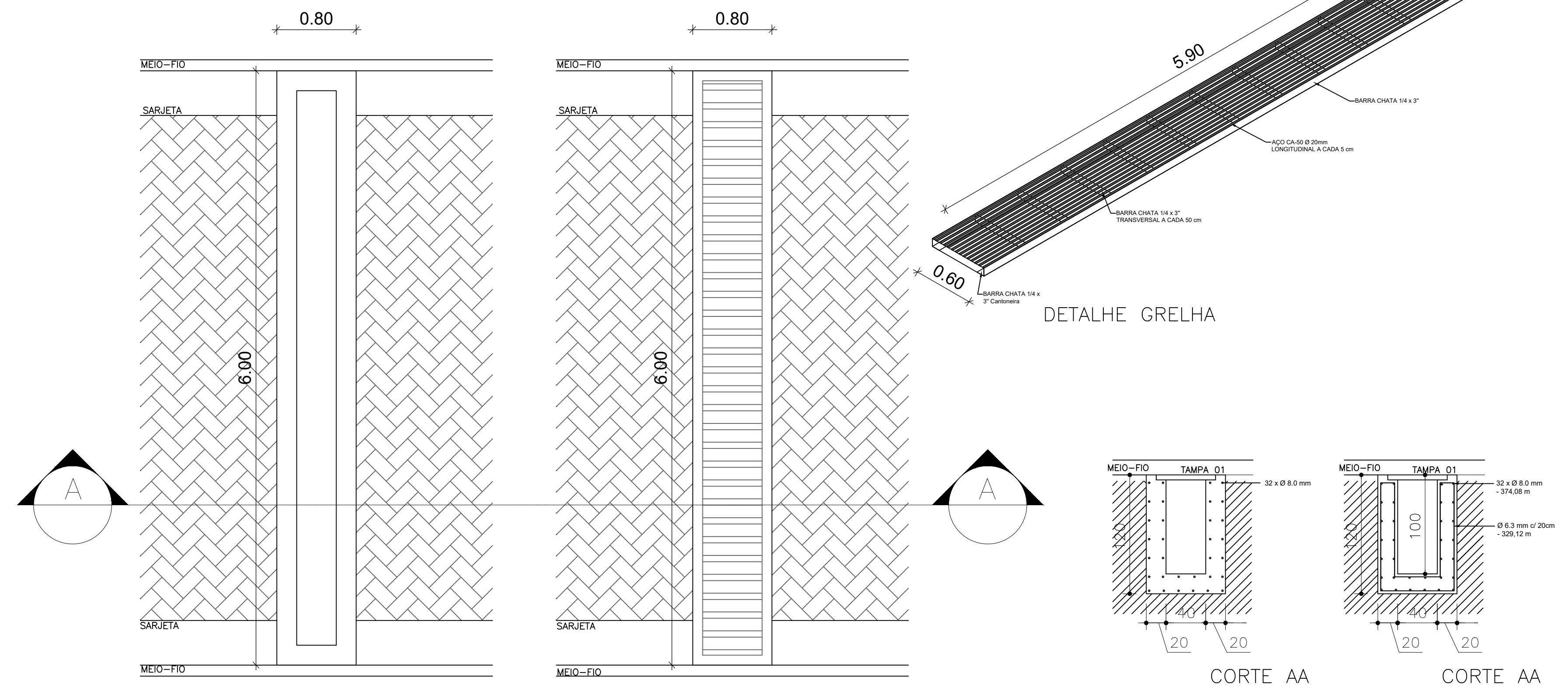
P-1

P-2

OBSERVAÇÕES:

1 - DIMENSÕES EM CENTÍMETROS

AÇO CA-50A



**OBS: TUBO DE LIGAÇÃO DA CAIXA RALO ATÉ O P.V.  
SERÁ ADOTADO TUBO DE PVC DE Ø 400mm.**



**PREFEITURA DE VILA PAVÃO/ES**  
**SECRETARIA MUNICIPAL DE DESENVOLVIMENTO ECONÔMICO**

**vilapavao.es.gov.br**  
**semde@vilapavao.es.gov.br**  
**(27) 3753-1001**

**Rua Travessa Pavão, nº 80, Centro - Vila Pavão/ES**

Prefeitura de Vila Pavão/ES:

## PROJETO DE DRENAGEM

OBRA:		ESCALA:	
PAVIMENTAÇÃO DE RUAS		S/ESCALA	
ENDEREÇO DA OBRA:			
DIVERSAS RUAS - BAIRRO NOVA MUNIQUE			
PROPRIETÁRIO:		CNPJ:	
MUNICÍPIO DE VILA PAVÃO		36.350.346/0001-67	
ENDEREÇO DO PROPRIETÁRIO:			
RUA TRAVESSA PAVÃO, N° 80, BAIRRO CENTRO, VILA PAVÃO/ES			
CONTEÚDO:		DESENHO:	
DETALHES DE DRENAGEM		THIAGO BERLESE	
		DATA:	REVISÃO:
		JANEIRO/2025	02
RESPONSÁVEL TÉCNICO:		PRANCHA:	
		02/02	

JULIANA T. FONSECA  
CREA-ES 057541/D